

F5000 2D

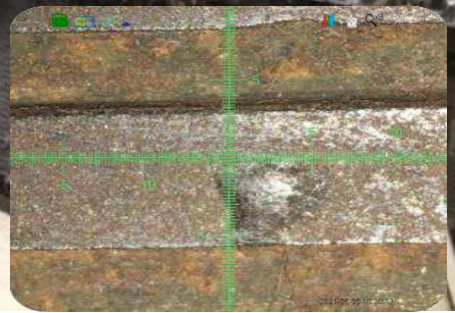
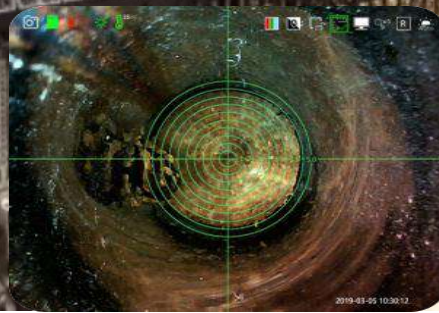
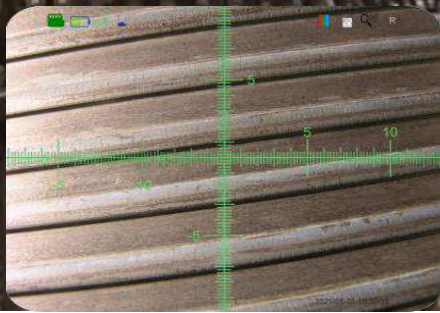
# BCS

MILITARY OPTICS

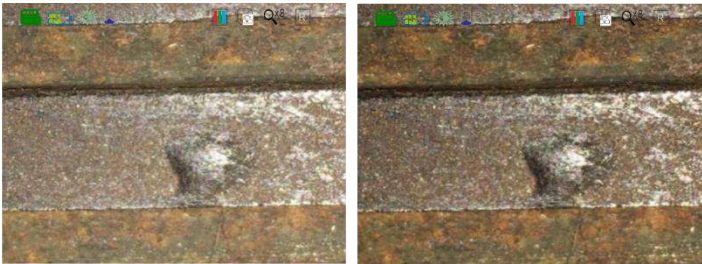
## BCS Optical F5000 2D Borescope Camera 6 mm



We Have a Borescope to Inspect All Your Small Arms



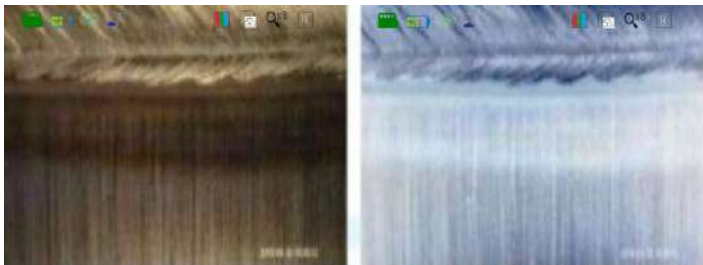
Strong intelligent image processing system: with the functions of image rotation, white balance, exposure control, negative film and zoom in & out, comparative measurement, it can meet all kinds of complicated inspection needs.



**White Balance:** Auto white balance with strong color reduction; manual-control white balance according to inspection needs.

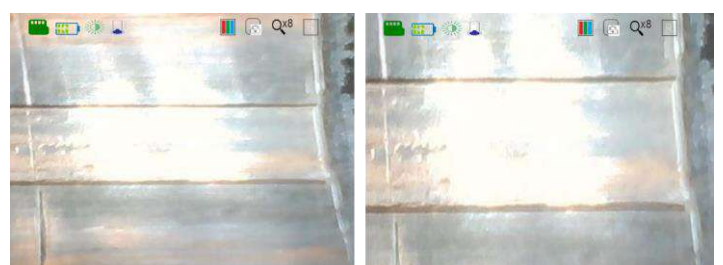


**Exposure Setting:** exposure suppression--the polished object is also inspected clearly; exposure compensation when checking large cavity, it can be more effective and clearer.

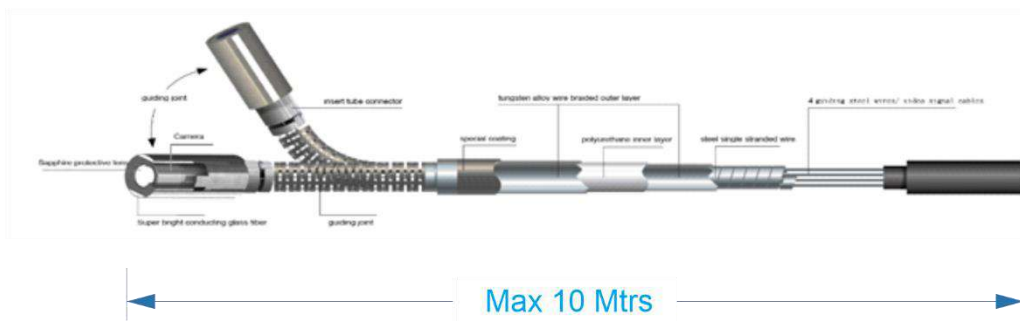


**Normal Mode:**  
HD image effect

**Negative Film Mode:**  
Enhance the ability to compare and analyze the internal defects of the



**Features:** Support 8X zoom in/out

360 ° joystick-control articulation, damping type positioning design, precise probe locking technology, make the detection more accurate and efficient. Independently developed technology of long-distance transmission ensures bending angle  $\geq 100^\circ$ , even the tube reaches 10 meters.



360° precision articulation



maximum bending angle  $\geq 190^\circ$



**STRONG HARDWARE**

F5000 2D series videoscope is module designed. Configured with 5.1 inches HD display, it can be interchangeable with 3.5 inches small display, suitable for different inspection requirements. The monitor and probe can be separated by one button. It is compatible with different probes like: 6mm front view, 6mm sideview, 6mm front view& sideview dual lens.



Monitor and tube can be separated by one button.



WIFI button



360° joystick



Damping control



**High temperature alarm function:** Orange alarm when the temperature is above 65 °C; Red alarm and shutdown when the temperature is more than 80 °C.



The image can be outputted to HD display by HDMI.



**Working Hours:** Original dual battery design, 8 hours working time; real-time battery indication



640\*480



1280\*960



light transmission ratio ≥ 95%



**Display resolution:** 1280\*960, high light, wide color gamut, all sight viewing angle, ensure clear image, rich colors and good color reproduction.



## PARAMETERS

product updates, the final parameters should be based on specific models.

F5000 2D Small Arms BoreScope System	Probe Diameter(mm)	Φ6		
	Camera Pixels	1,000,000		
	Image Resolution	1280×720		
	Video Resolution	1280×720		
	DOF	front view: 10-100mm/ side view: 3-25mm or 10--100mm (optional)		
	FOV	120°		
	Viewing Direction	0° front view	90° side view	0° front view&90° side view
	Light Source	LED light/optic fiber		
	Illuminance	maximum: 50000+Lx 1~9 levels adjustable light		
	Tube Length	1.5mtr / 3 mtr / 5 mtr / 6 mtr (customized for other length)		
	Protecting Device of Durability	42mm buffer protection device between tube and handle		
	Articulation	360° joystick-control articulation		
	Bending Angle	maximun:190° (1.5M-3M) /120° (4M/5M) / 100°(6M-7M)/ 90° (8M-10M)		
	Probe Positioning	damping positioning & articulation lock device.		
	Wi-Fi Transmission	image transmission to Mobile phone, computer by Wi-Fi(optional)		
Monitor System	Display	5.1" color IPS display, all sight viewing angle, sunshade design		
	Display Resolution	1280*960		
	Zoom In/Out	8X		
	Language	English / French / German / Spanish / Japanese / Russian / Korean/ Polish/ Italian		
	White Balance Suppression	5 levels adjustable		
	White Balance	auto white balance, adjusts and eliminates speckles to achieve optimal images.		
	Image Effect	negative film/ black & white/standard		
	Temperature Indication	high temperature alarm (optional)		
	IP Level	probe/tube: IP67		
	Software Function	playback, image parameters adjust and rotate		
	Structure	hand-held integrated design		
	Image/Video Format	JPEG/MOV		
	Comparative Measurement	Use measuring probe and analog scale to compare and analyze the internal defect and size of the inspected object.		
	Data Port	HDMI video output, Micro USB port with water & dust proof device		
	Working Time	≥8h		
	Battery Capacity	3.7V, 3200mAh×2		
	Power Charge	DC5V, 1A		
Weight	0.5Kg~0.8Kg			
Compatibility	interchangeable monitor and tube			