

## Borescopes Army - Naval - Air Force

Registered Address: Suite G31 Genesis Centre, Innovation Way Stoke on Trent ST6 4BF, UK

Email: [info@borecleaningsystems.com](mailto:info@borecleaningsystems.com)

Web: <https://borecleaningsystems.com>

Tele: +44 7464 727015

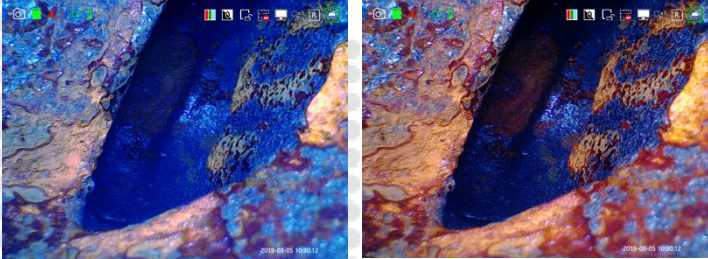
# BCS

## MILITARY OPTICS

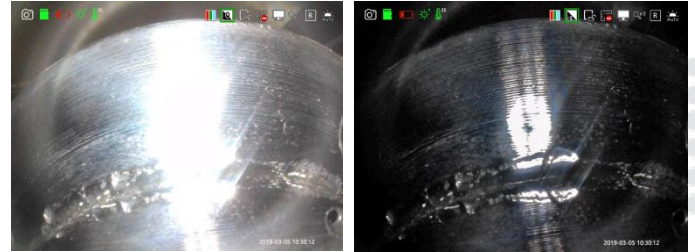


# INTELLIGENT SOFTWARE

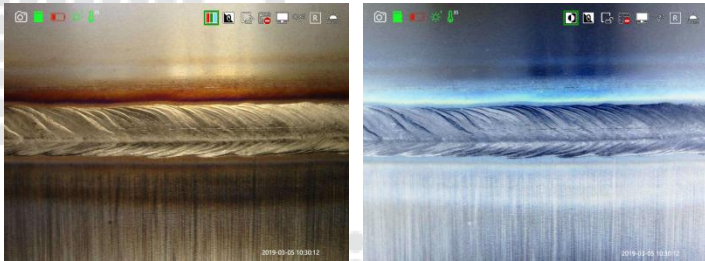
Strong intelligent image processing system: with the functions of mage rotation, white balance, exposure control, negative film and zoom in & out, comparative measurement, it can meet all kinds of complicated inspection



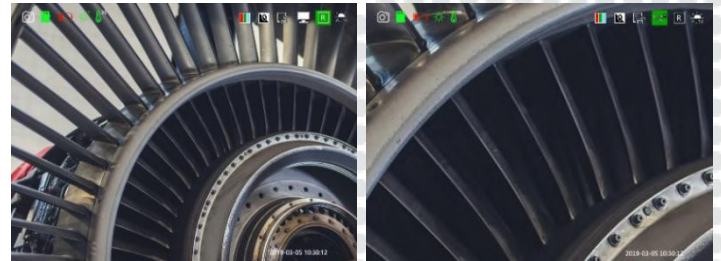
White Balance: Auto white balance with strong color reduction; manual-control white balance according to inspection needs.



Exposure Setting: exposure suppression--the polished object is also inspected clearly; exposure compensation--when checking large cavity, it can be more effective and clearer

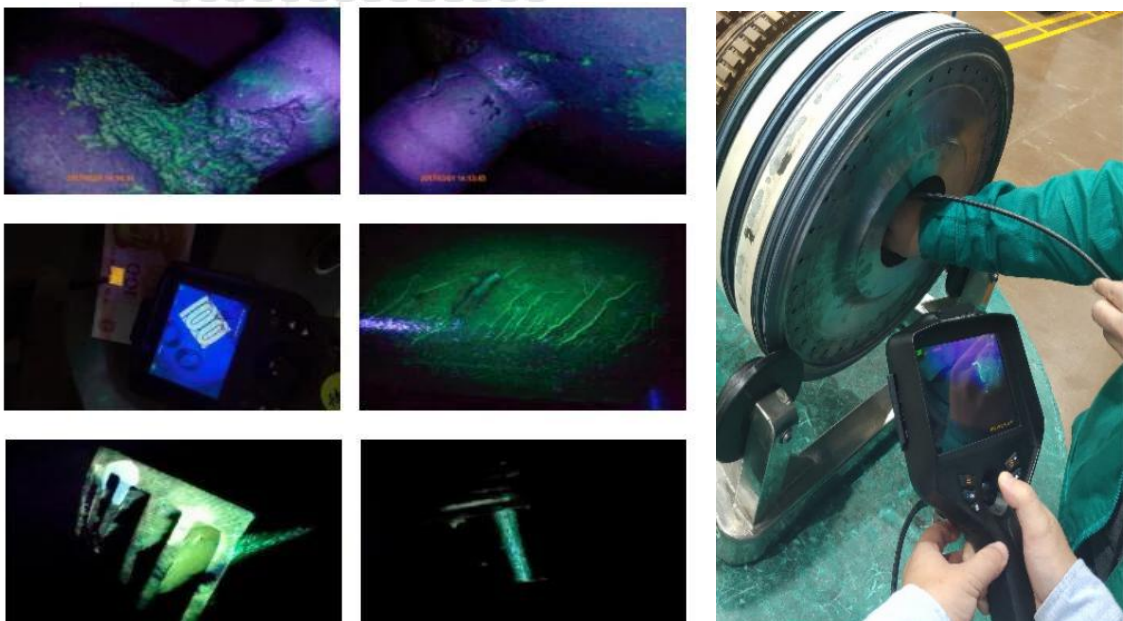


Normal Mode: HD image effect Negative Film Mode: Enhance the ability to compare and analyze the internal defects of the inspected objects.



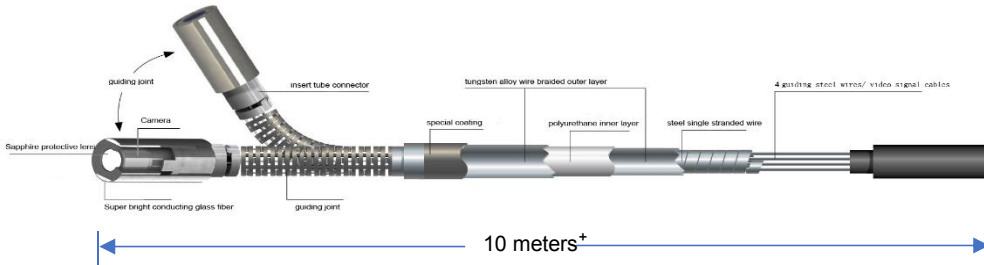
Support 8X zoom in/out

# UV INSPECTION ON SITE



## FLEXIBLE ARTICULATION CONTROL

360° joystick-control articulation, damping type positioning design, precise probe locking technology, make the detection more accurate and efficient. Independently developed technology of long-distance transmission ensures bending angle  $\geq 100^\circ$ , even the tube reaches 10 meters ( only available on white LED light ) .



360° precision articulation



maximum bending angle  $\geq 190^\circ$

## STRONG HARDWARE

HD UV fluorescent videoscope adopts modular design, the host and the handle can be separated with one button. The dual light source of the probe is designed in an integrated way, and an insert tube is equipped with both ultraviolet light and white light at the same time. By one-key switch through the universal button, white light can be used to find the direction, and ultraviolet fluorescence detection can be performed.

Monitor and tube can be separated by one button.



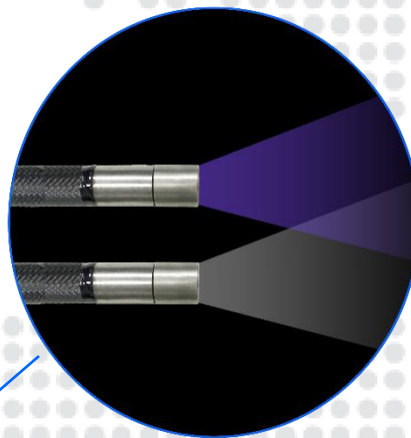
WIFI button



360° joystick control



damping control





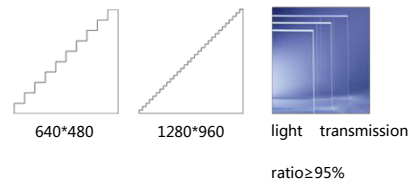
High temperature alarmfunction: Orange alarm when the temperature is above 65 °C; Red alarm and shutdown when the temperature is more than 80 °C.



The image can be outputted to HD display by HDMI.



Original dual battery design,8 hours working time; real-time battery indication



Display resolution: 1280\*960, high light, wide color gamut, all sight viewing angle, ensure clear image, rich colors and good color reproduction.

## QUALITY ASSURANCE

All products are complied with RoHS, CE and ISO standard and passed testing for temperature , waterproof , drop , vibration and pressure. We devote ourselves to providing high-quality professional inspection instrument to every customer.



## BORESCOPE PARAMETERS

Tube System	Probe Diameter(mm)	Φ6
	Camera Pixels	1,000,000
	Image Resolution	1280×720
	Video Resolution	1280×720
	DOF	10-100mm
	FOV	120°
	Viewing Direction	front view
	Light Source	Rear-mounted optic fiber cold UV+White source
	Illuminance	1000uw/cm <sup>2</sup>
	Tube Length	1.0m/1.5m

	Protecting Device of Durability	80mm buffer protection device between tube and handle
	Articulation	360° joystick-control articulation
	Bending Angle	Maximun:190°
	Probe Positioning	Damping positioning & articulation lock device
	Wi-Fi Transmission	Image transmission to Mobile phone, computer by Wi-Fi(optional)
<b>Monitor System</b>	Display	5.1" color IPS display, all sight viewing angle, sunshade design
	Display Resolution	1280*960
	Zoom In/Out	8X
	Language	English / French / German / Spanish / Japanese / Traditional Chinese / Simplified Chinese / Russian / Korean
	White Balance Suppression	5 levels adjustable
	White Balance	Auto white balance, automatically adjusts and eliminates speckles to achieve optimal images.
	Image Effect	Negative film/ black & white/standard
	Temperature Indication	High temperature alarm ( optional )
	IP Level	Probe/tube: IP67
	Software Function	Playback, image parameters adjust and rotate
	Structure	Hand-held integrated design
	Image/Video Format	JPEG/MOV
	Comparative Measurement	Use measuring probe and analog scale to compare and analyze the internal defect and size of the inspected object.
	Data Port	HDMI video output, Micro USB port with water & dust proof device
	Working Time	≥4h
	Battery Capacity	3.7V , 3200mAh×2
	Power Charge	DC5V, 1A
Weight	≤0.8Kg	
Compatibility	Interchangeable monitor and tube with different diameters	
<b>Accessories</b>	Standard Configuration	Instrument case:1pc; videoscope: 1 set; battery: 2pcs; card reader: 1pc; 32G. TF card: 1pc; charger: 1pc; USB cable: 1pc; user manual: 1 set

